

# 中小企「防壞帳」服務優惠



聯絡人: 李小姐 (Joanne Lee)

查詢電話: 2585 9188  
www.coface.com.hk

此優惠只適用於香港公司，客戶必須同時購買以下 2 項服務，是項優惠不適用於科法斯現有登記客戶，優惠期至 2009 年 12 月 31 日。

## 網上查詢買家信用額度

透過網上查詢科法斯給與買家信用額度作為參考，如科法斯給與的信用額度低於新買家要求或已給與現有買家的信用額度，即可調整對該買家提供的信用條款，減低壞帳風險。

查詢買家數目	10
合約有效期	12 個月
國家	EUROPE : Andorra, Austria, Belgium, Bulgaria, Croatia, Cyprus, Czech Republic, Denmark, Estonia, Finland, France, Germany, Greece, Hungary, Iceland, Ireland, Italy, Latvia, Liechtenstein, Lithuania, Luxembourg, Malta, Morocco, Monaco, Netherlands, Norway, Poland, Portugal, Romania, Slovenia, Spain, Sweden, Switzerland, Turkey, United Kingdom, Ukraine, Vatican AMERICAS: Canada, United States, Brazil
價目	<b>HK\$5,500</b> <b>香港出口商會會員價</b> <b>HK\$3,599</b>

## 海外買家信用評估報告

海外買家信用評估報告助你了解買家身份、業務運作、訴訟紀錄、行業前景及信用建議，個別國家更能提供財務資信，適合定期檢視現有買家的業務狀況，或審核較大信用額度要求。

信用評估報告數目	5 (只限標準報告)
合約有效期	6 個月
國家	超過 100 個國家，參閱價目表 BIS200901-HKG_01
價目	<b>HK\$6,000</b> <b>香港出口商會會員價</b> <b>HK\$3,599</b>

## 搜尋高質素海外買家

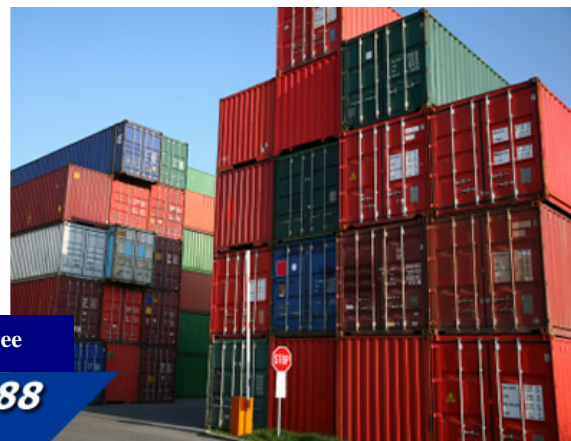
利用免費搜尋工具尋找海外買家作業務推廣，可能數量眾多但良莠不齊，往往經過多次電郵來往，才發覺互不合適。康帕斯的产品分類多達 57,000 種，讓你更有效挑選高質素的海外買家作產品宣傳，增加成功機會。

服務包括	<ul style="list-style-type: none"> <li>無限次搜尋 Kompass 買家資料庫</li> <li>下載 300 名買家詳細資料紀錄</li> </ul>
合約有效期	6 個月
價目	<b>HK\$6,000</b> <b>香港出口商會會員價</b> <b>HK\$2,699</b>

## 商帳追收

金融海嘯下，海外買家拖欠貨款數字激增，由於時間、距離、法規及語言的差異，直接追討海外貨款困難重重，如透過律師追討，費用高昂亦不保證成功機會。科法斯追收網絡遍及全球 100 多過國家，專業可靠，成功追收貨款後才收取費用，讓你以最低成本減低壞帳損失。

優惠	<ul style="list-style-type: none"> <li><b>佣金低至 20%</b> (只限個別國家及需附有相關條件)</li> <li>欠款公司並未清盤或破產及附其有效地址</li> <li>帳齡少於 365 天</li> </ul>
條件	



# SME 'Bad Debt Protection' Package

Contact Person: Joanne Lee  
 Enquiry : **2585 9188**  
[www.coface.com.hk](http://www.coface.com.hk)

*Customers are required to buy 2 of the below services in one purchase. The offer is not available to existing Coface customers. The offer is limited to Hong Kong companies only and valid until 31 December 2009.*

## On line credit check

You could check the credit limit of your buyers on-line at any time. Coface's credit opinion helps you granting credit terms to new buyer or as a benchmark for your credit terms offered to existing buyers. If your terms offered are larger than Coface's opinion, you could consider taking action to minimize the non-payment risks.

No. of buyer check	10
Subscription period	12 months
Countries	EUROPE : Andorra, Austria, Belgium, Bulgaria, Croatia, Cyprus, Czech Republic, Denmark, Estonia, Finland, France, Germany, Greece, Hungary, Iceland, Ireland, Italy, Latvia, Liechtenstein, Lithuania, Luxembourg, Malta, Morocco, Monaco, Netherlands, Norway, Poland, Portugal, Romania, Slovenia, Spain, Sweden, Switzerland, Turkey, United Kingdom, Ukraine, Vatican AMERICAS: Canada, United States, Brazil
Price	<b>HK\$5,500</b> <b>HKEA Members' Price HK\$3,599</b>

## International Business Credit Report

Business credit report contains important information including registration record, litigation record, operation details, industry outlook and financial information (subject to availability) of a company. It is particularly useful for credit review of your existing customers or considering larger credit terms for new buyers at current crisis.

No. of credit report	5 (standard report only)
Subscription period	6 months
Countries	Over 100 countries available. Please refer to tariff 'BIS200901-HKG_01'
Price	<b>HK\$6,000</b> <b>HKEA Members' Price HK\$3,599</b>

## Quality Overseas Buyers Search

Free search engine provides numerous overseas buyers but not everyone is suitable for your products. Kompass marketing database includes 57,000 product categories that help you to reach the most qualified buyers for business promotion.

Services	<ul style="list-style-type: none"> <li>● Unlimited search of Kompass company database</li> <li>● Download of 300 company records</li> </ul>
Subscription period	6 months
Price	<b>HK\$6,000</b> <b>HKEA Members' Price HK\$2,699</b>

## Commercial Debt Collection

According to Coface record, the no. of company insolvency and default increases sharply in recent period. Due to the difference in distance, language and legal aspects, debt collection is always a challenge to SMEs. Coface 's collection network covers more than 100 countries. Commission is only charged after the debt is successfully collected.

Offer	<ul style="list-style-type: none"> <li>● <b>Commission rate at 20% up</b> (limited countries and conditions apply)</li> </ul>
Conditions	<ul style="list-style-type: none"> <li>● Debtor still in business and with valid address</li> <li>● Overdue less than 12 months</li> </ul>